



US DRIVES, INC.

P.O. Box 281

2221 Niagara Falls Boulevard

Niagara Falls, New York 14304-0281

Tel: (716) 731-1606 Fax: (716) 731-1524

Visit us at www.usdrivesinc.com

ETHERNET COMMUNICATIONS

Remote drive monitoring and control just got easier. Our Phoenix DX and Phoenix EX AC Drives can now be connected to any Ethernet Network with the addition of an optional Ethernet Communications Card. This card connects directly to a customer's Ethernet Network using a standard RJ45 type connector. It employs Modbus TCP protocol, the most commonly used protocol for industrial control applications. A standard web browser can be used for setup and monitoring and all drive parameters can be accessed using the Modbus TCP protocol.

Monitor and Control your AC Drive from Anywhere:

With this option card, a single drive or a group of drives can be networked together and given an Internet Address. Once connected to the Internet, your drives can be monitored, configured, and controlled from anywhere in the world. Password protection is provided to prevent unauthorized access and control.

US Drives Ethernet Gateway Web Administration - Microsoft Internet Explorer

Address: http://192.168.1.200

US DRIVES, INC.

Ethernet Gateway Configuration/Status

Configuration | Security | Scan Parameters | Activity Log

Scan Parameters For Drive #1

Parameter	Name	Value
M00P01	RATED MOTOR VOLT	240
M00P02	BASE MOTOR FREQ	60.0
M00P03	RATED MOTOR CURR	1500
M00P04	NUMBER OF POLES	4 POLES
M00P05	SYM CURRENT LIM	149.9
M00P06	ACCEL RAMP 1	60.0
M00P07	DECEL RAMP 1	60.0
M00P08	MAX FREQUENCY	60.0
M00P09	MINIMUM FREQ	0.0
M00P10	KEYPAD REFERENCE	50.0
M00P11	SOFTWARE VERSION	2.025
M00P12	DRIVE MODEL NO	E4-1250HT
M00P13	MOTOR VOLTAGE	0
M00P14	MOTOR POWER	0
M00P15	DC BUS VOLTAGE	681
M00P16	AC LINE VOLTAGE	505
M00P17	LAST FAULT	UNDERVOLT
M00P18	MOT CURR-TOTAL	0
M00P19	FINAL FREQ REF	50.0
M00P20	MOTOR SHAFT RPM	0

Refresh

US DRIVES, INC.

Ethernet Gateway Configuration/Status

Configuration | Security | Scan Parameters | Activity Log

Current Password:

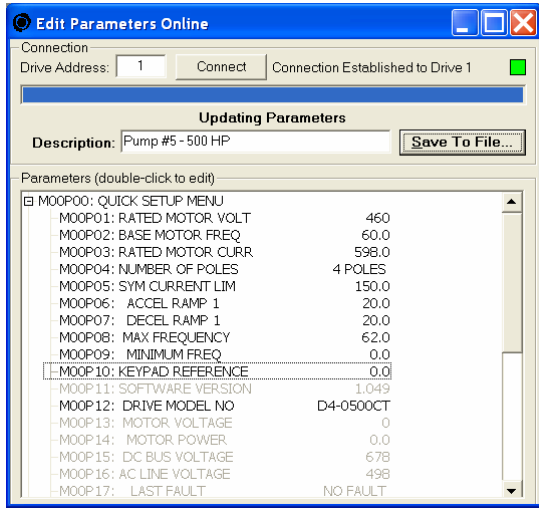
New Password:

Retype New Password:

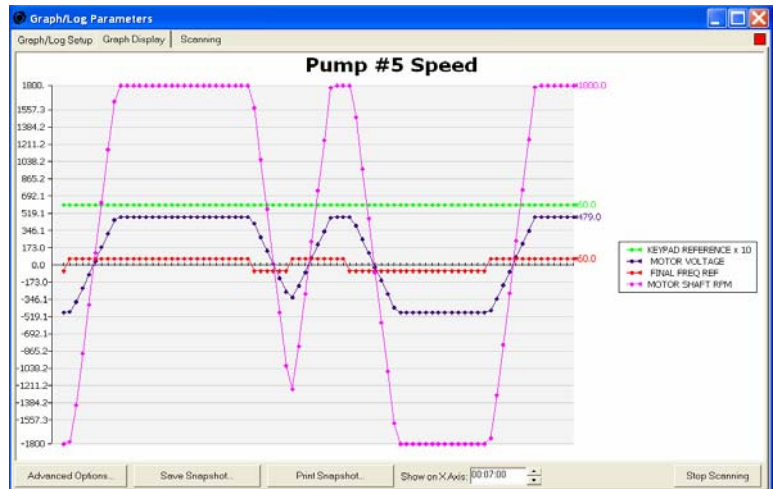
Save Changes

Drivemaster 6.53

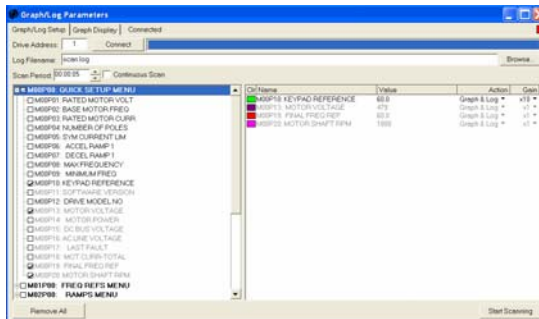
Drivemaster 6.53 is a Windows based program designed to make drive set-up, record keeping, and troubleshooting easy. Drive parameters can be extracted from a drive, reviewed, modified, printed, stored on disk, reloaded back into the same drive, or copied to another drive. Data Logging and Graphing of drive parameters is also possible. Offline and Online Editing is supported. Drivemaster 6.53 supports both Modbus Serial Communications and Ethernet /Modbus TCP Communications.



Edit and Save Drive Parameters

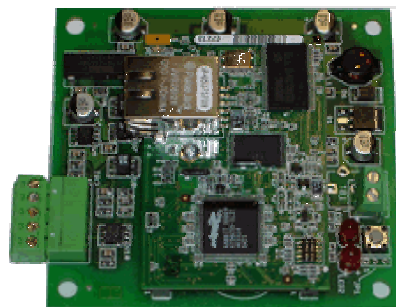


Graph

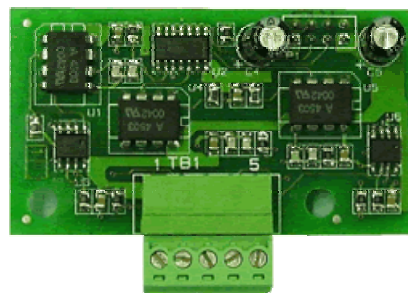


Date	Time	MOOP14	MOOP15	MOOP16	MOOP18	MOOP19	MOOP20	M04P02	M04P03
01-27-2006	13:38:52	0.5	635	457	6.5	60.0	1800	0.7	6.5
01-27-2006	13:39:26	0.5	632	457	6.5	60.0	1800	0.7	6.4
01-27-2006	13:40:00	0.6	633	457	6.5	-60.0	-1800	-0.9	6.5
01-27-2006	13:40:34	0.6	633	457	6.5	-60.0	-1800	-0.8	6.4
01-27-2006	13:41:08	0.6	632	457	6.4	-60.0	-1800	-0.8	6.4
01-27-2006	13:41:41	0.3	631	457	9.7	60.0	837	5.5	8.0
01-27-2006	13:42:15	0.5	634	457	6.5	60.0	1800	0.7	6.5
01-27-2006	13:42:49	0.5	631	457	6.4	60.0	1800	0.7	6.5
01-27-2006	13:43:22	0.6	633	457	7.7	-60.0	-804	-2.3	7.1
01-27-2006	13:43:56	0.5	628	456	6.4	-60.0	-1800	-0.8	6.4

Data Logging



Ethernet Communications Card



Serial Communications Card